

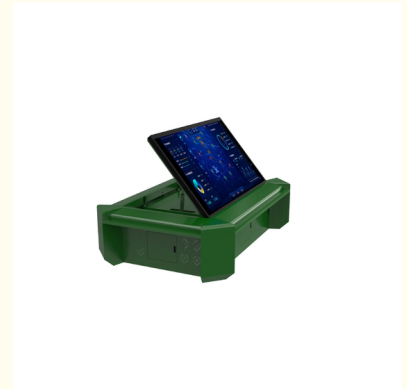
100cm X 100cm X 20cm Interactive Electronic Reality Sand Table Projection Distance 2m

Our Product Introduction

for more products please visit us on projector-cabinet.com

Basic Information

- Place of Origin: Shenzhen City, Guangdong Province, China
- Brand Name: shirui
- Model Number: Non-standard customization
- Minimum Order Quantity: 1
- Price: Negotiation
- Delivery Time: 15 to 20 working days
- Payment Terms: T/T



Product Specification

- Features: Interactive, Realistic, Educational
- Product Category: Electronic Sand Table
- Operating System: Windows 10
- Dimensions: 100cm X 100cm X 20cm
- Weight: 10kg
- Product Name: Transforming Education With Electronic Sand Table Technology
- Interactive Features: Touchscreen
- Software Compatibility: AutoCAD, SketchUp, Revit
- Highlight: **electronic reality sand table, reality sand table projection distance 2m, interactive electronic sand table**

Product Description

100cm X 100cm X 20cm Interactive Electronic Sand Table for Projection Distance of 2m

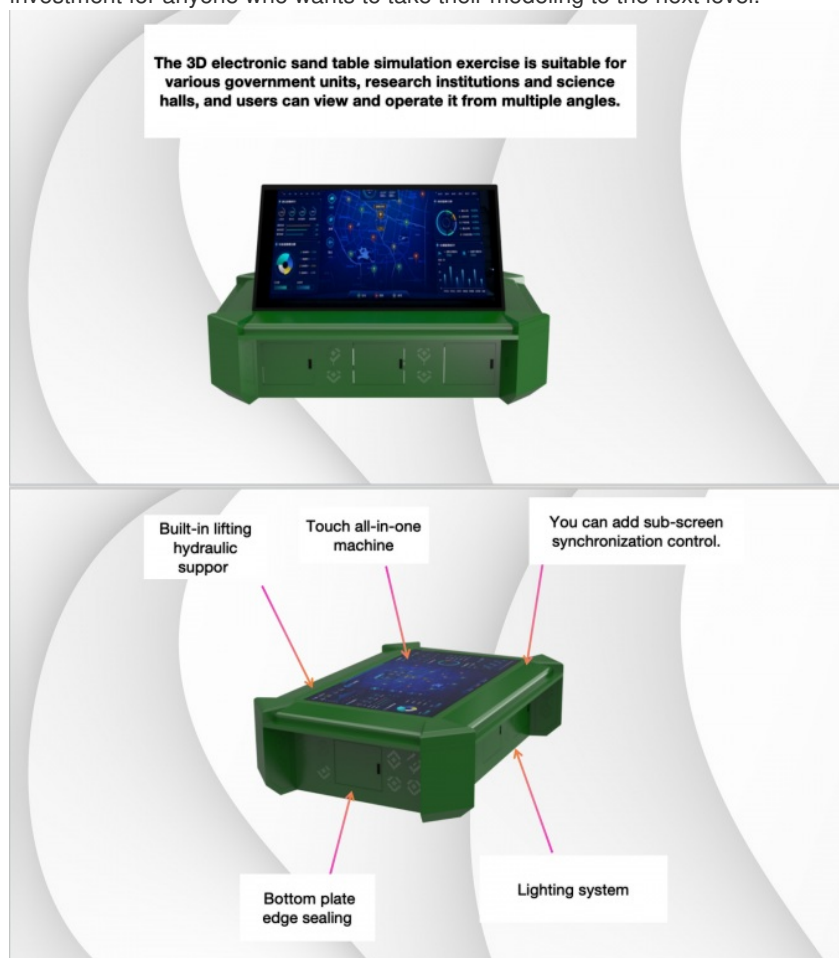
Description:

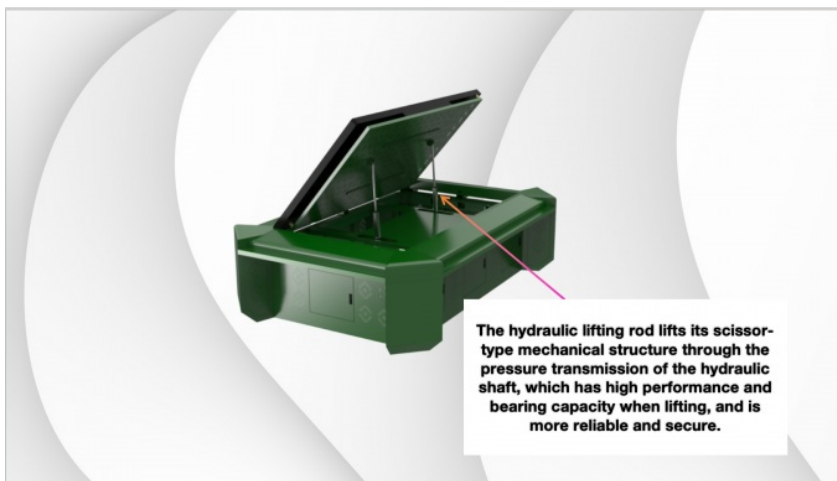
One of the key features of the Electronic Sand Table is its projection technology. It uses laser projection technology to display your models with stunning clarity. The projection distance of the table is 2m, which means you can view your models from a comfortable distance. The resolution of the table is 1920 X 1080, which ensures that your models are displayed with sharp and crisp details.

The Electronic Sand Table is compatible with some of the most popular design software such as AutoCAD, SketchUp, and Revit. This means you can easily import your designs into the table and start creating your models. The table is also designed to be user-friendly, which means you can start using it right away without any complicated setup or installation process.

The size of the table is 120cm X 80cm X 15cm, which means it can fit comfortably in any workspace. The table is also designed to be durable and long-lasting, which means you can use it for many years to come. The Electric sand model is perfect for architects, designers, and engineers who want to create accurate and detailed models of their designs.

In conclusion, the Electronic Sand Table is the perfect tool for anyone who wants to create accurate and detailed sand models of their designs. Its laser projection technology, user-friendly design, and compatibility with popular design software make it a must-have tool for architects, designers, and engineers. With its durable construction and long-lasting design, the Electronic Sand Table is a smart investment for anyone who wants to take their modeling to the next level.





Specification:

Specification	
Application	Monitoring command center, Security room, Monitoring room, Government command
Design Style	Modern
Material	Metal
Place of Origin	China, Shenzhen City, Guangdong Province
General Use	Commercial Furniture
Appearance	Modern
Brand Name	shirui
Product name	Electronic sand table
Color	pitch green/customize
Applicable population	government,Monitoring center,
Usage	Display Usage
Function	Multi-functional
Style	Display Equipments
Design	3D+CAD
Feature	Easy Assembly

FAQ:

1. who are we?

We are based in Guangdong, China, start from 2014,sell to Domestic Market(5.00%),Southeast Asia(3.00%),Mid East(2.00%). There are total about 11-50 people in our office.

2. how can we guarantee quality?

Always a pre-production sample before mass production;
Always final Inspection before shipment;

3.what can you buy from us?

Outdoor projector housing,Projector protective box,Projector waterproof box,Outdoor network cabinet,Sheet metal processing

4. why should you buy from us not from other suppliers?

We have an independent design and R&D team and 10 years of industry experience.

5. what services can we provide?

Accepted Delivery Terms: FOB,EXW

Accepted Payment Currency:USD,EUR,JPY,CAD,AUD,HKD,GBP,CNY;

Accepted Payment Type: T/T;

Language Spoken:English,Chinese

6. Where can I get product & price information?

A: Send us an inquiry e-mail, we will contact you as we receive your mail.

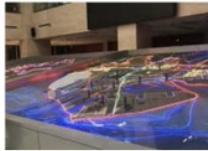
Product features:

1. The hydraulic lifting rod is made of a very soft FPC base material, which can be bent at will without breaking and is easy to form.
2. The ergonomics concept of ergonomic products is reasonably coordinated with the indoor environment, and the height of the workstation, the distance and inclination angle of the display, the operation and debugging of the equipment, and the protection of the operators are considered from multiple angles and levels, so that the operators can be protected for 7X24 hours.
3. Advanced baking paint technology with high-strength metal structure is adopted, so that the product lines are smooth, the design is reasonable and the color is clear.
4. Multi-angle observation Observe the target from multiple angles, without limitation.

Live picture:



Widely used in different industries:



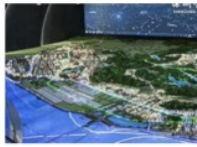
data centre



Dispatching center



Electronic military exercise



Real estate center



city planning



National defense application

Video Description:



Shenzhen Shirui Exhibition Equipment Co., Ltd.



+8614775699146



shiruisunshaohong@outlook.com



projector-cabinet.com

Room 103, Building B, Pingtaichang Technology Park, No. 15, Xiongyu Road, Tangxiayong Community, Yanluo Street, Baoan District, Shenzhen City