

## Industrial Ground Cage For Grounding System Easy To Install

Our Product Introduction

for more products please visit us on [projector-cabinet.com](http://projector-cabinet.com)

### Basic Information

- Place of Origin: Shenzhen City, Guangdong Province, China
- Brand Name: shirui
- Certification: ip66/EMC/POHS
- Model Number: Non-standard customization
- Minimum Order Quantity: 5
- Price: Negotiation
- Delivery Time: 15 to 20 working days
- Payment Terms: T



### Product Specification

- Features: Anti-corrosion, High Strength, Easy Maintenance
- Size: Customizable
- Usage: Grounding System
- Corrosion Resistance: High
- Installation: Easy To Install
- Durability: Long-lasting
- Shape: Cylindrical
- Load Capacity: Strong
- Highlight: industrial ground cage, ground cage for grounding system

### Product Description

## Ground Cage The Essential Grounding System for Industrial Applications

### 1. company profile

Shenzhen shirui presentation equipment co., ltd ,is a sheet metal processing company that mainly focuses on solutions fooutdoor projector protective box solutions. it also also provides sheet metal processing such as outdoor network cabinetsprojector pan-tilts, and shell waterproof boxe!The company has been commnittec to nrowicind thest idea projector outdoor use solutions for maior projector aaentand project integrators. The products are suitable for various outdoor scenes such as cultural tourism night tours, gardenlandscaping, 3DMAPPING, architectural projection, water curtain projection, mountain projection, cave projection, cartheaters, exhibition hall displays, etc



### 2. Specification

Specification	
item	value
Place of Origin	China
	Shenzhen, Guangdong
Brand Name	thisshirui
Cabinet Standard	According to customer's request
Specification size	550mm*550mm*1000mm (the size is designed according to the height of the column)
Protection Level	IP65
Type	Projector shell embedded part floor cage
External Size	can customize
Material	Powder paint
Type	Equipment Enclosure
Product Name	Projector shell embedded part floor cage
Material	Galvanized sheet
Surface treatment	Powder paint
Application	Outdoor embedded parts floor cage
Function	climate control
Custom Service	Offerable
Feature	OEM ODM Support

Color	Accept Customized
IP Rating	IP66Waterproof Box

### 3.FAQ

#### 1. who are we?

We are based in Guangdong, China, start from 2014,sell to Domestic Market(5.00%),Southeast Asia(3.00%),Mid East(2.00%). There are total about 11-50 people in our office.

#### 2. how can we guarantee quality?

Always a pre-production sample before mass production;

Always final Inspection before shipment;

#### 3.what can you buy from us?

Outdoor projector housing,Projector protective box,Projector waterproof box,Outdoor network cabinet,Sheet metal processing

#### 4. why should you buy from us not from other suppliers?

We have an independent design and R&D team and 10 years of industry experience.

#### 5. what services can we provide?

Accepted Delivery Terms: FOB,EXW

Accepted Payment Currency:USD,EUR,JPY,CAD,AUD,HKD,GBP,CNY;

Accepted Payment Type: T/T;

Language Spoken:English,Chinese

#### 6. Where can I get product & price information?

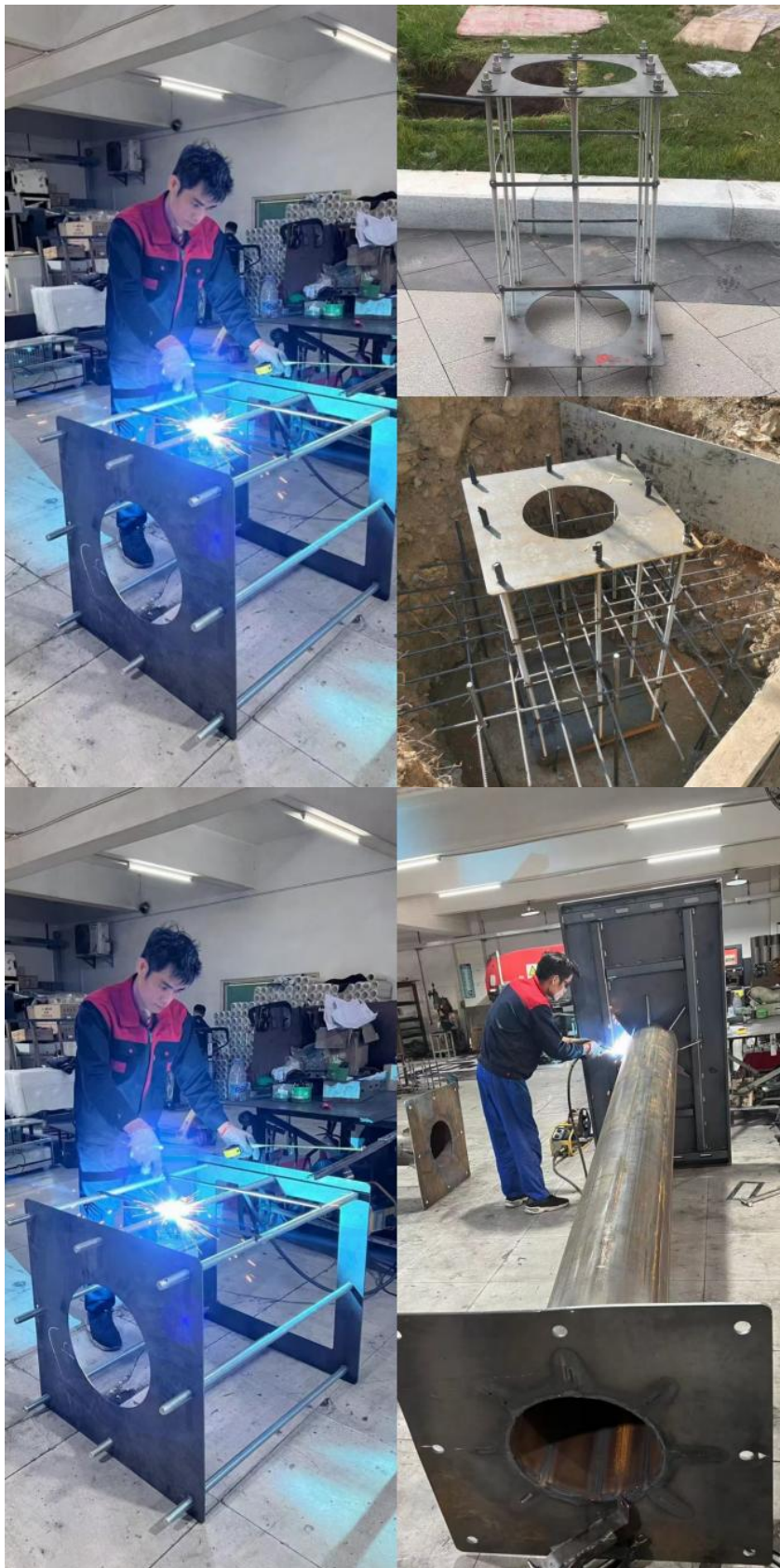
A: Send us an inquiry e-mail, we will contact you as we receive your mail.

### 4.Outdoor Projector Enclosures Example



### 5.Embedded parts ground cage application scenario





6. Production process materials

## Production process materials

### Production



design drawing

Designers model and design the shape, and export CAD drawings to customers to confirm the size and appearance.



laser cutting

After confirming the drawings and production materials, use the confirmed drawings for laser cutting.



bend

Folding the box shape by a six-axis bending machine for molding.

The folded parts are welded to complete the box by hand, and then polished for baking paint.



weld



stove varnish

Anti-static powder paint is waterproof, anti-corrosive, anti-static and high temperature resistant.

After baking, the finished product is assembled and tested, and the factory parameters are set and shipped without problems.



Reassemble

## Production process materials

### Production box material

#### Galvanized sheet



镀锌板

Galvanized sheet is a commonly used material, and its thickness is 1.2-1.5-1.8, which is more rust-resistant than cold-rolled sheet.

#### 201 stainless steel



201不锈钢

The anticorrosion effect of 201 stainless steel is worse than that of 304, and better than that of galvanized sheet, so it can be used in non-seaside wet areas.

#### 304 stainless steel



304不锈钢

304 stainless steel is food grade, with good anticorrosion effect and high material price, which is suitable for use in the environment with serious corrosion by the sea.

#### cold-rolled plate



冷轧钢板

Cold-rolled steel is usually used as floor cage flange, box flange, external adjustment and fixing bracket, and the thickness is usually 3-4 mm.

## 7.Craft show

### Craft show

#### Large laser cutting machine



#### Large six-axis bending machine



#### Mechanical arm welding



#### Eight-axis high-precision bending machine



## 8.Packing & Delivery



To better ensure the safety of your goods, professional, environmentally friendly, convenient and efficient packaging services will be provided.

Outdoor Projection Box ,

Product design

CAD drawing for approval

Swimming pool options for extreme humidity and heat,

High humidity – Cave systems/underground/tunnel options for damp environments,

Portrait, landscape or inverted

Any number of doors,

Thermal insulation,

Any mounting i.e. uni-strut or M8 threaded studs,

Any RAL colour finish,

Any orientation - Vertical, landscape or portrait,

Any IP rated cable entries. eg: Data, HDMI , SDI

**9.Foreign customers come to visit the factory to buy products.**





**10. Lead time**

Quantity (pieces)	1 - 50	> 50
Lead time (days)	20	To be negotiated

**11. Video Description**



**Shenzhen Shirui Exhibition Equipment Co., Ltd.**

+8614775699146

shiruisunshaohong@outlook.com

projector-cabinet.com

Room 103, Building B, Pingtaichang Technology Park, No. 15, Xiongyu Road, Tangxiayong Community, Yanluo Street, Baoan District, Shenzhen City