

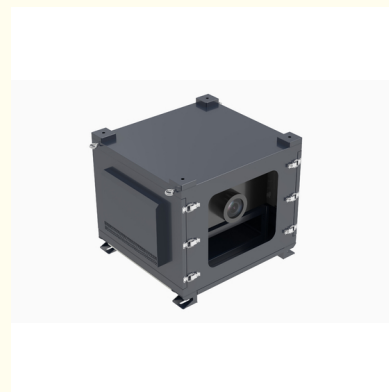
## Powder Painted Outdoor Projector Screen Cabinet High Durability Projector Cabinet

Our Product Introduction

for more products please visit us on [projector-cabinet.com](http://projector-cabinet.com)

### Basic Information

- Place of Origin: China, Shenzhen, Guangdong
- Brand Name: thisshirui
- Certification: ip66/EMC/POHS
- Model Number: Non-standard customization
- Minimum Order Quantity: 5
- Price: Negotiation
- Delivery Time: 15 to 20 working days
- Payment Terms: T/T



### Product Specification

- Function: Climate Control
- Size: Medium
- Wattage: 500W
- Voltage: 110-220V
- Product Category: Outdoor Projector Waterproof Box
- Weight: 130kg
- Highlight: outdoor projector screen cabinet,  
high durability projector cabinet,  
outdoor projector cabinet

### Product Description

## Powder Painted Outdoor Projector Waterproof Box for Durability

### 1. Air conditioning internal circulation

1. The box body is made of high-quality galvanized sheet with a thickness of 1.2/1.5/2.0/3.0, and stainless steel, aluminum alloy and other materials can be selected.
2. The surface layer is electrostatically sprayed, baked and cured at high temperature, which has a long service life, and does not come off or crack.
3. The projection window uses ultra-white optical glass with a transmittance of over 95%.
4. Built-in intelligent control system, equipped with temperature sensor, temperature and humidity sensor and heating dehumidification module.
- 5, the temperature is lower than 5 degrees, humidity is higher than 90% heating start. When the temperature is higher than 10 degrees and the humidity is lower than 65%, the heating stops.

### Ceiling installation: safe and stable



The ceiling-mounted enclosure is the safest and most stable installation option. They are also the most versatile, because they can be installed anywhere with ceilings.

For applications where safety and stability are critical, a ceiling-mounted enclosure is a good choice. They are also a good choice for applications that need to install the projector in a higher position, such as stadiums or outdoor theaters.

### Track installation: flexible and adjustable



The track mounting shell is flexible and adjustable. They can move along the track to change the position of the projector.

Rail-mounted chassis is a good choice for applications that need to move projectors frequently, such as conference rooms or outdoor classrooms. For the need to install the projector in a ceiling with limited clearance, such as a beam.

### Column installation: fashion and caution



The cylindrical shell is smooth and cautious. They are a good choice for applications that need to install the projector in a visible position, such as hotel lobby or outdoor restaurant.

The column housing is a good choice for applications that need to protect the projector from theft. They are also a good choice for applications that need to install projectors in narrow spaces (such as columns).

## Ground installation: durable and versatile.



The ground-mounted shell is durable and widely used. They can be installed in various locations, including concrete, asphalt and grass.

The ground-mounted enclosure is a good choice for applications that need to install the projector in a lower position, such as parks or outdoor activity spaces. For those who need to protect the projector from elements such as snow or rain.

### 2.Specification

Specification	
item	value
Place of Origin	China
	Shenzhen, Guangdong
Brand Name	thisshirui
Cabinet Standard	According to customer's request
Protection Level	IP65
Type	Outdoor projector housing
External Size	can customize
Material	Powder paint
Type	Equipment Enclosure
Product Name	Outdoor projector housing
Material	Galvanized sheet
Surface treatment	Powder paint
Application	Outdoor Projector box
Function	climate control
Custom Service	Offerable
Feature	OEM ODM Support
Color	Accept Customized
IP Rating	IP66Waterproof Box
Ambient Temperature	-15 to 50 degree (5-122)
Ambient Humidity	0-100%
Temperature Control	5-40°C
Humidity Control	10-80%
Voltage and Frequency	220V-50HZ

### 3.FAQ

#### 1. who are we?

We are based in Guangdong, China, start from 2014,sell to Domestic Market(5.00%),Southeast Asia(3.00%),Mid East(2.00%). There are total about 11-50 people in our office.

#### 2. how can we guarantee quality?

Always a pre-production sample before mass production;

Always final Inspection before shipment;

#### 3.what can you buy from us?

Outdoor projector housing,Projector protective box,Projector waterproof box,Outdoor network cabinet,Sheet metal processing

#### 4. why should you buy from us not from other suppliers?

We have an independent design and R&D team and 10 years of industry experience.

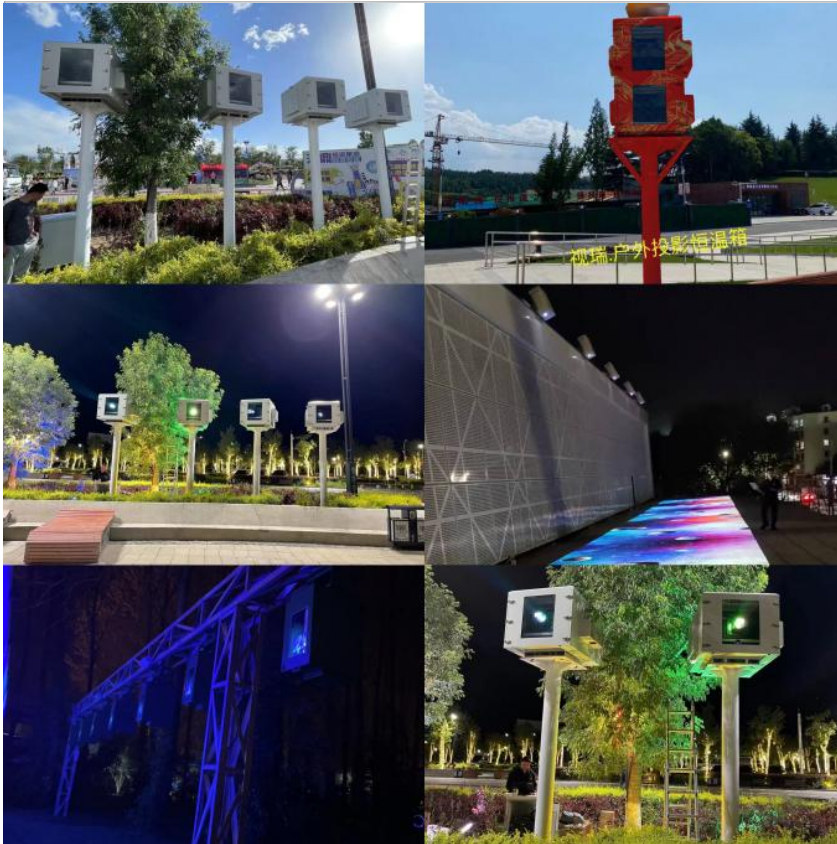
#### 5. what services can we provide?

Accepted Delivery Terms: FOB,EXW

Accepted Payment Currency:USD,EUR,JPY,CAD,AUD,HKD,GBP,CNY;

Accepted Payment Type: T/T;  
Language Spoken: English, Chinese  
**6. Where can I get product & price information?**  
A: Send us an inquiry e-mail, we will contact you as we receive your mail.

#### 4. Outdoor Projector Enclosures Example



#### 5. Moistureproof box configuration version

### Moistureproof box configuration version

配置

**1. The fresh air system+heating module (air cooling)**  
uses an industrial silent fan to fan the heat, and draws out the hot air in the box and sucks in the fresh air at the same time to form a circulation effect, which reduces the heat discharged by the projector in the box, and the heating module removes the fog of glass beads and dehumidifies.

**2. Fresh air system (air-cooled)+air conditioner+heating module**  
fan+air conditioner is called dual system, and it can be used on large lumen machines, and it can also be used in harsh weather environment. Besides cooling, air conditioner can also dehumidify, and the heating module can remove the fog of glass water beads to dehumidify.

fan

air-conditioning

Heating module

### Production process materials

Production

design drawing

laser cutting

bend

Designers model and design the shape, and export CAD drawings to customers to confirm the size and appearance.

After confirming the drawings and production materials, use the confirmed drawings for laser cutting.

Folding the box shape by a six-axis bending machine for molding.

The folded parts are welded to complete the box by hand, and then polished for baking paint.

Anti-static powder paint is waterproof, anti-corrosive, anti-static and high temperature resistant.

After baking, the finished product is assembled and tested, and the factory parameters are set and shipped without problems.

weld

stove varnish

Reassemble



## Production process materials

### Production box material

#### Galvanized sheet



镀锌板

Galvanized sheet is a commonly used material, and its thickness is 1.2-1.5-1.8, which is more rust-resistant than cold-rolled sheet.

#### 201 stainless steel



201不锈钢

The anticorrosion effect of 201 stainless steel is worse than that of 304, and better than that of galvanized sheet, so it can be used in non-seaside wet areas.

#### 304 stainless steel



304不锈钢

304 stainless steel is food grade, with good anticorrosion effect and high material price, which is suitable for use in the environment with serious corrosion by the sea.

#### cold-rolled plate



冷轧钢板

Cold-rolled steel is usually used as floor cage flange, box flange, external adjustment and fixing bracket, and the thickness is usually 3-4 mm.

## 6.Craft show

### Craft show

#### Large laser cutting machine



#### Mechanical arm welding



#### Large six-axis bending machine



#### Eight-axis high-precision bending machine



## 7.Packing & Delivery



To better ensure the safety of your goods, professional, environmentally friendly, convenient and efficient packaging services will be provided.

Outdoor Projection Box ,

Product design

CAD drawing for approval

Swimming pool options for extreme humidity and heat,

High humidity – Cave systems/underground/tunnel options for damp environments,

Portrait, landscape or inverted

Any number of doors,

Thermal insulation,

Any mounting i.e. uni-strut or M8 threaded studs,  
Any RAL colour finish,  
Any orientation - Vertical, landscape or portrait,  
Any IP rated cable entries. eg: Data, HDMI , SDI

**8.Foreign customers come to visit the factory to buy products.**



**9.Lead time**

Quantity (pieces)	1 - 50	> 50
Lead time (days)	20	To be negotiated

**10.Case video of outdoor projector shell**



**Shenzhen Shirui Exhibition Equipment Co., Ltd.**



+8614775699146



shiruisunshaohong@outlook.com



projector-cabinet.com

Room 103, Building B, Pingtaichang Technology Park, No. 15, Xiongyu Road, Tangxiayong Community, Yanluo Street, Baoan District, Shenzhen City