

Outdoor Air Conditioning Projector Housing with Fan Cooling System

Our Product Introduction

for more products please visit us on projector-cabinet.com

Basic Information

- Place of Origin: Shenzhen City, Guangdong Province, China
- Brand Name: shirui
- Certification: ip66/EMC/POHS
- Model Number: Non-standard customization
- Minimum Order Quantity: 5
- Price: Negotiation
- Delivery Time: 15 to 20 working days
- Payment Terms: T/T



Product Specification

- Waterproof: IP66 Waterproof Rating
- Temperature Range: 18-25°C
- Material: Galvanized Sheet
- Heat Dissipation: Efficient Heat Dissipation Design
- Compatibility: Compatible With Various Projector Models
- Power Source: Electric
- Function: Protect The Internal Components Of The Projector
- Durability: High Durability And Corrosion Resistance
- Highlight: **dustproof Projector Protective box, anti corrosion Projector Waterproof Box, OEM outdoor projector housing**



More Images

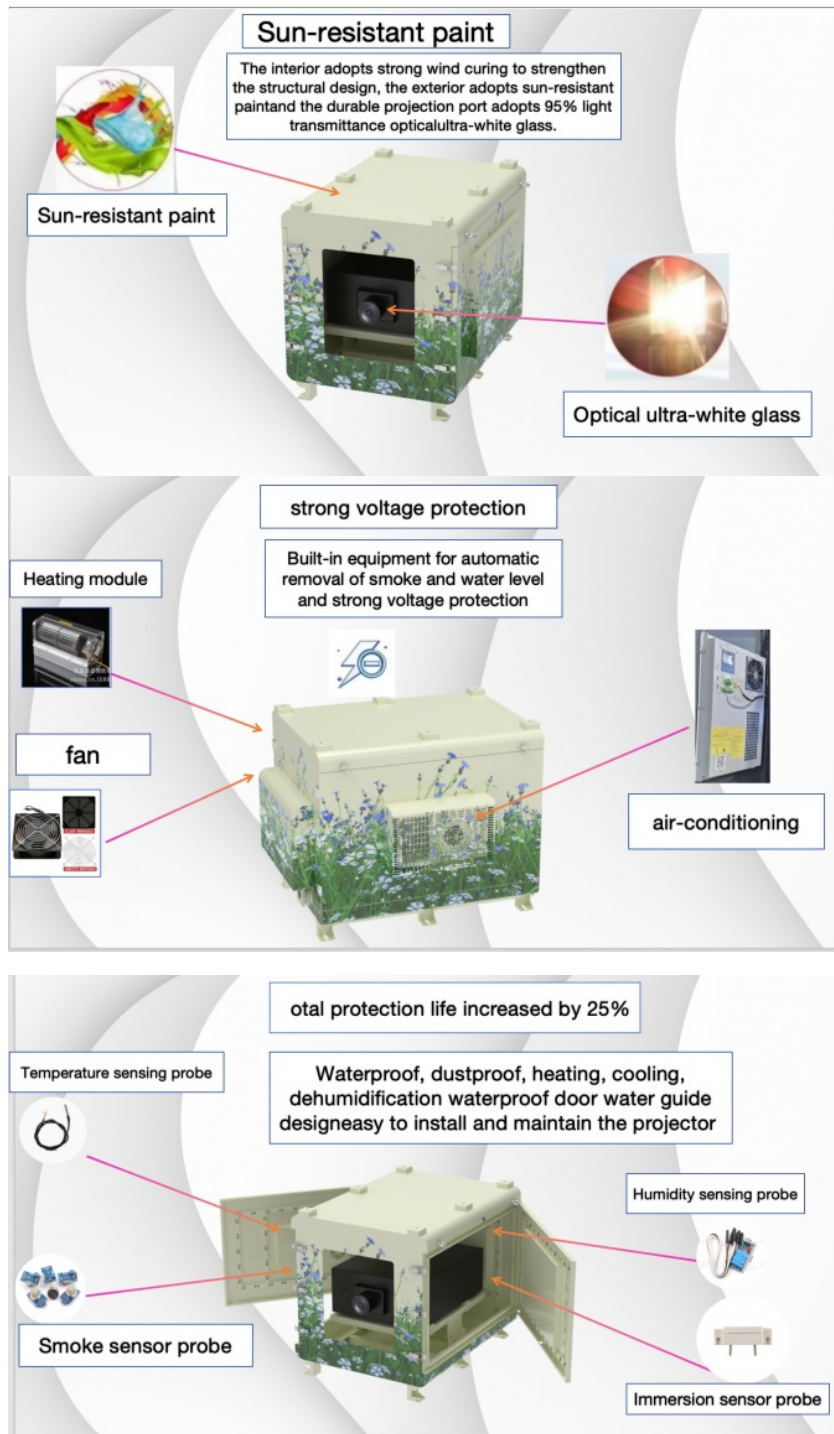


Product Description

Outdoor Air Conditioning Projector Housing with Fan Cooling System

1.Product Descriptio

- 1)Reserved 16A or 10A multi-function sockets.
- 2) The power supply for the projector is equipped with an AC contactor. n case of a fault, the power will be immediately cut off to protect the projector.
- 3) when the internal temperature is 2'C or more above the preset value (30''c),the air conditioning cooling will start, andwhen it is 2'C or less below the preset value, the cooling will stop.
- 4) When the internal temperature is 2'C or more above the preset value (35'c), the fan cooling system will start, andwhen it is 2'C or less below the preset value, the fan will stop.
- 5)Passed IP65 waterproof certification.



2.Specification

Specification	
item	value
Place of Origin	China

	Shenzhen, Guangdong
Brand Name	thisshirui/Customize
Model Number	SR-30K-XKKTIP65Control Box
Protection Level	IP65
Type	Control Box
External Size	
Material	Powder paint
Type	Equipment Enclosure
Product Name	Outdoor projector waterproof case
Material	Galvanized Steel
Surface treatment	Powder paint
Application	Outdoor
Function	climate control
Custom Service	Offerable
Feature	OEM ODM Support
Color	Accept Customized
IP Rating	IP66Waterproof Box
Ambient Temperature	-15 to 50 degree (5-122)
Ambient Humidity	0-100%
Temperature Control	5-40°C
Humidity Control	10-80%

3.FAQ

1. who are we?

We are based in Guangdong, China, start from 2014,sell to Domestic Market(5.00%),Southeast Asia(3.00%),Mid East(2.00%). There are total about 11-50 people in our office.

2. how can we guarantee quality?

Always a pre-production sample before mass production;

Always final Inspection before shipment;

3.what can you buy from us?

Outdoor projector housing,Projector protective box,Projector waterproof box,Outdoor network cabinet,Sheet metal processing

4. why should you buy from us not from other suppliers?

We have an independent design and R&D team and 10 years of industry experience.

5. what services can we provide?

Accepted Delivery Terms: FOB,EXW

Accepted Payment Currency:USD,EUR,JPY,CAD,AUD,HKD,GBP,CNY;

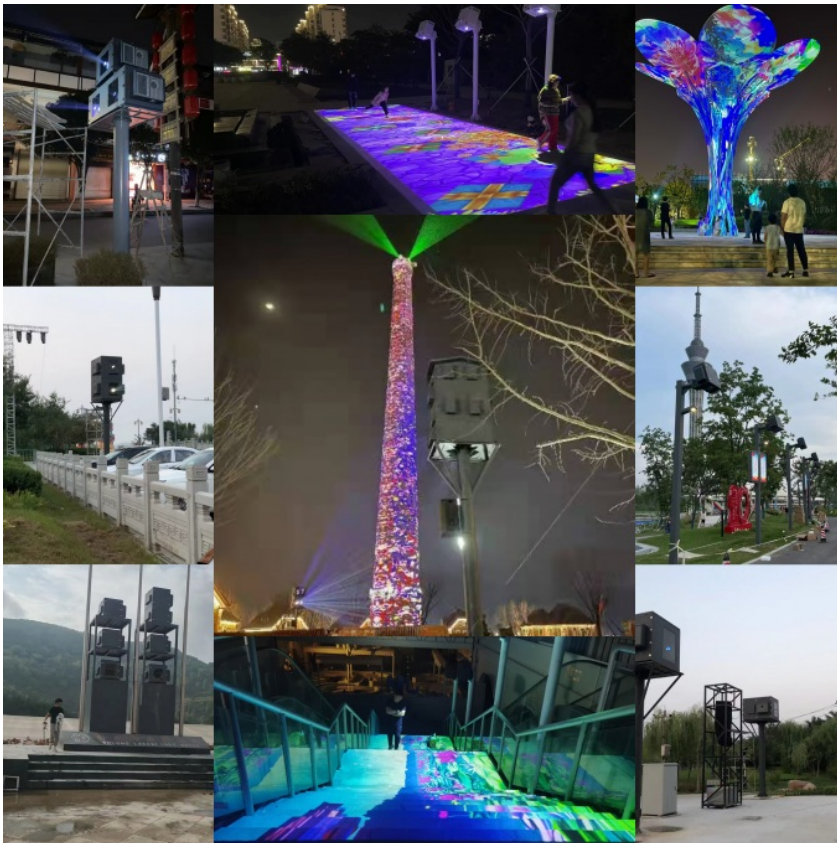
Accepted Payment Type: T/T;

Language Spoken:English,Chinese

6. Where can I get product & price information?

A: Send us an inquiry e-mail, we will contact you as we receive your mail.

4.Outdoor Projector Enclosures Example



5. Moistureproof box configuration version

Ceiling installation: safe and stable



The ceiling-mounted enclosure is the safest and most stable installation option. They are also the most versatile, because they can be installed anywhere with ceilings.

For applications where safety and stability are critical, a ceiling-mounted enclosure is a good choice. They are also a good choice for applications that need to install the projector in a higher position, such as stadiums or outdoor theaters.

Track installation: flexible and adjustable



The track mounting shell is flexible and adjustable. They can move along the track to change the position of the projector.

Rail-mounted chassis is a good choice for applications that need to move projectors frequently, such as conference rooms or outdoor classrooms. For the need to install the projector in a ceiling with limited clearance, such as a beam.

Column installation: fashion and caution



The cylindrical shell is smooth and cautious. They are a good choice for applications that need to install the projector in a visible position, such as hotel lobby or outdoor restaurant.

The column housing is a good choice for applications that need to protect the projector from theft. They are also a good choice for applications that need to install projectors in narrow spaces (such as columns).

Ground installation: durable and versatile.



The ground-mounted shell is durable and widely used. They can be installed in various locations, including concrete, asphalt and grass.

The ground-mounted enclosure is a good choice for applications that need to install the projector in a lower position, such as parks or outdoor activity spaces. For those who need to protect the projector from elements such as snow or rain.

Craft show



7.Packing & Delivery



To better ensure the safety of your goods, professional, environmentally friendly, convenient and efficient packaging services will be provided.

Outdoor Projection Box ,
 Product design
 CAD drawing for approval
 Swimming pool options for extreme humidity and heat,
 High humidity – Cave systems/underground/tunnel options for damp environments,
 Portrait, landscape or inverted
 Any number of doors,
 Thermal insulation,
 Any mounting i.e. uni-strut or M8 threaded studs,
 Any RAL colour finish,
 Any orientation - Vertical, landscape or portrait,
 Any IP rated cable entries. eg: Data, HDMI , SDI

8.Foreign customers come to visit the factory to buy products.



9. Waterproof test of projector shell

10. Lead time

Quantity (pieces)	1 - 50	> 50
Lead time (days)	20	To be negotiated

11. Video Description



+8614775699146



shiruisunshaohong@outlook.com



projector-cabinet.com

Room 103, Building B, Pingtaichang Technology Park, No. 15, Xiongyu Road, Tangxiayong Community, Yanluo Street, Baoan District, Shenzhen City