

## 12000 BTU Heating Capacity Air Conditioning Projector Housing made of Galvanized Sheet

Our Product Introduction

for more products please visit us on [projector-cabinet.com](http://projector-cabinet.com)

### Basic Information

- Place of Origin: Shenzhen City, Guangdong Province, China
- Brand Name: shirui
- Certification: ip66/EMC/POHS
- Model Number: Non-standard customization
- Minimum Order Quantity: 5
- Price: Negotiation
- Delivery Time: 15 to 20 working days
- Payment Terms: T/T



### Product Specification

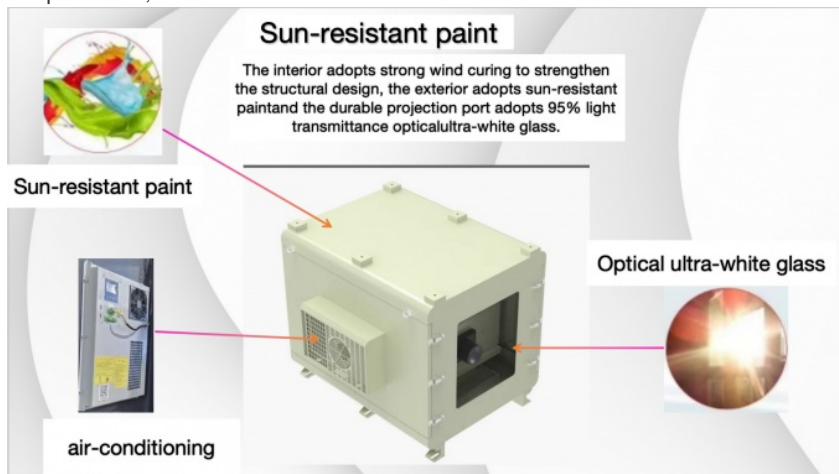
- Projection Distance: 3-5 Meters
- Size: 12 Inches
- Power Source: Electric
- Power Supply: 110-240V
- Voltage: 110V-220V
- Compatibility: Universal
- Model: Projector Housing
- Heating Capacity: 12000 BTU
- Highlight: **outdoor projector housing,  
Air Conditioning Projector Housing,  
Projector Protective box**

### Product Description

## 12000 BTU Heating Capacity Air Conditioning Projector Housing made of Galvanized Sheet

### Product Description:

The waterproof case of air-conditioning projector shell is a special protective cover, which aims to protect the projector from harsh environmental conditions. These enclosures are usually made of durable materials, such as galvanized sheet or stainless steel, and are designed to withstand extreme temperatures, moisture and dust.



### Specification:

| Specification         |                                 |
|-----------------------|---------------------------------|
| item                  | value                           |
| Place of Origin       | China                           |
|                       | Shenzhen, Guangdong             |
| Brand Name            | thisshirui                      |
| Cabinet Standard      | According to customer's request |
| Protection Level      | IP65                            |
| Type                  | Outdoor projector housing       |
| External Size         | can customize                   |
| Material              | Powder paint                    |
| Type                  | Equipment Enclosure             |
| Product Name          | Outdoor projector housing       |
| Material              | Galvanized sheet                |
| Surface treatment     | Powder paint                    |
| Application           | Outdoor Projector box           |
| Function              | climate control                 |
| Custom Service        | Offerable                       |
| Feature               | OEM ODM Support                 |
| Color                 | Accept Customized               |
| IP Rating             | IP66 Waterproof Box             |
| Ambient Temperature   | -15 to 50 degree (5-122)        |
| Ambient Humidity      | 0-100%                          |
| Temperature Control   | 5-40°C                          |
| Humidity Control      | 10-80%                          |
| Voltage and Frequency | 220V-50HZ                       |

### FAQ:

#### 1. who are we?

We are based in Guangdong, China, start from 2014, sell to Domestic Market(5.00%), Southeast Asia(3.00%), Mid East(2.00%). There are total about 11-50 people in our office.

#### 2. how can we guarantee quality?

Always a pre-production sample before mass production;

Always final Inspection before shipment;

**3.what can you buy from us?**

Outdoor projector housing,Projector protective box,Projector waterproof box,Outdoor network cabinet,Sheet metal processing

**4. why should you buy from us not from other suppliers?**

We have an independent design and R&D team and 10 years of industry experience.

**5. what services can we provide?**

Accepted Delivery Terms: FOB,EXW

Accepted Payment Currency:USD,EUR,JPY,CAD,AUD,HKD,GBP,CNY;

Accepted Payment Type: T/T;

Language Spoken:English,Chinese

**6. Where can I get product & price information?**

A: Send us an inquiry e-mail, we will contact you as we receive your mail.

## Ceiling installation: safe and stable



The ceiling-mounted enclosure is the safest and most stable installation option. They are also the most versatile, because they can be installed anywhere with ceilings.

For applications where safety and stability are critical, a ceiling-mounted enclosure is a good choice. They are also a good choice for applications that need to install the projector in a higher position, such as stadiums or outdoor theaters.

## Track installation: flexible and adjustable



The track mounting shell is flexible and adjustable. They can move along the track to change the position of the projector.

Rail-mounted chassis is a good choice for applications that need to move projectors frequently, such as conference rooms or outdoor classrooms. For the need to install the projector in a ceiling with limited clearance, such as a beam.

## Column installation: fashion and caution



The cylindrical shell is smooth and cautious. They are a good choice for applications that need to install the projector in a visible position, such as hotel lobby or outdoor restaurant.

The column housing is a good choice for applications that need to protect the projector from theft. They are also a good choice for applications that need to install projectors in narrow spaces (such as columns).

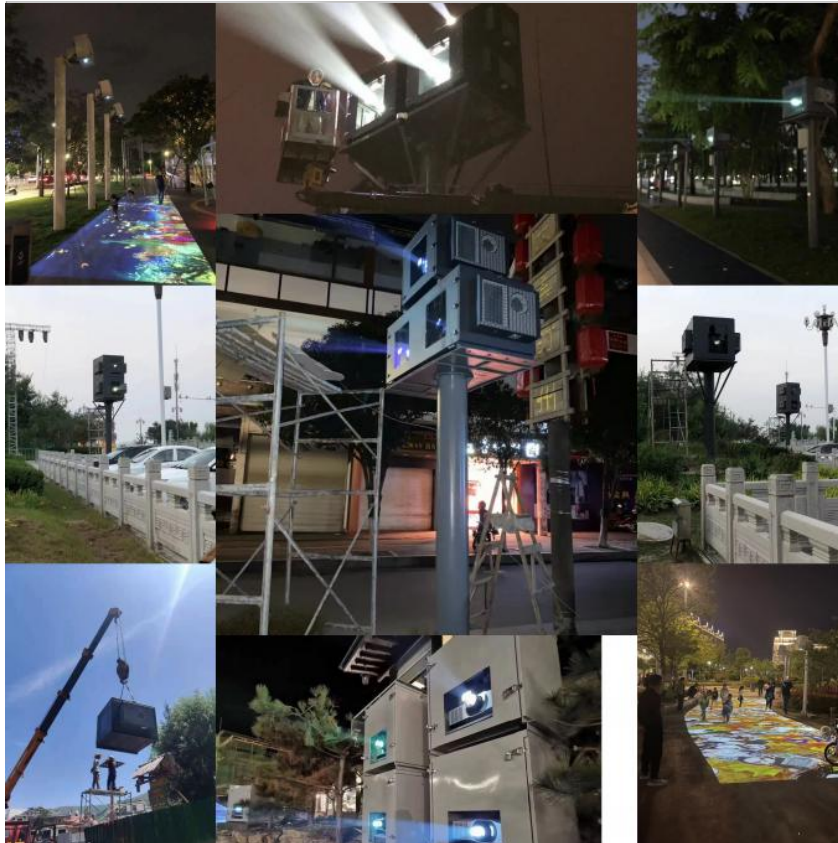
## Ground installation: durable and versatile.



The ground-mounted shell is durable and widely used. They can be installed in various locations, including concrete, asphalt and grass.

The ground-mounted enclosure is a good choice for applications that need to install the projector in a lower position, such as parks or outdoor activity spaces. For those who need to protect the projector from elements such as snow or rain.

### Outdoor Projector Enclosures Example:



### Packing & Delivery:





To better ensure the safety of your goods, professional, environmentally friendly, convenient and efficient packaging services will be provided.

---

Outdoor Projection Box ,  
 Product design  
 CAD drawing for approval  
 Swimming pool options for extreme humidity and heat,  
 High humidity – Cave systems/underground/tunnel options for damp environments,  
 Portrait, landscape or inverted  
 Any number of doors,  
 Thermal insulation,  
 Any mounting i.e. uni-strut or M8 threaded studs,  
 Any RAL colour finish,  
 Any orientation - Vertical, landscape or portrait,  
 Any IP rated cable entries. eg: Data, HDMI , SDI

---

**Foreign customers come to visit the factory to buy products.**

---



Lead time:

|                   |        |                  |
|-------------------|--------|------------------|
| Quantity (pieces) | 1 - 50 | > 50             |
| Lead time (days)  | 20     | To be negotiated |

Video Description:



**Shenzhen Shirui Exhibition Equipment Co., Ltd.**

+8614775699146

shiruisunshaohong@outlook.com

projector-cabinet.com

Room 103, Building B, Pingtaichang Technology Park, No. 15, Xiongyu Road, Tangxiayong Community, Yanluo Street, Baoan District, Shenzhen City