

## Wall Mounted Projector Waterproof Box Custom Materials Outdoor Projector Housing 110V To 220V

Our Product Introduction

for more products please visit us on [projector-cabinet.com](http://projector-cabinet.com)

### Basic Information

- Place of Origin: Shenzhen City, Guangdong Province, China
- Brand Name: shirui
- Certification: ip66/EMC/POHS
- Model Number: Non-standard customization
- Minimum Order Quantity: 5
- Price: Negotiation
- Delivery Time: 15 to 20 working days
- Payment Terms: T/T



### Product Specification

- Color: White
- Material: Galvanized Sheet
- Waterproof Level: IP66
- Weight: 130kg
- Installation Method: Wall-mounted
- Dustproof Level: IP6X
- Wattage: 50W
- Voltage: 110-220V
- Type: Waterproof Box
- Size: Medium
- Highlight: outdoor projector housing 110v, wall mounted projector waterproof box, projector waterproof box custom materials



### More Images

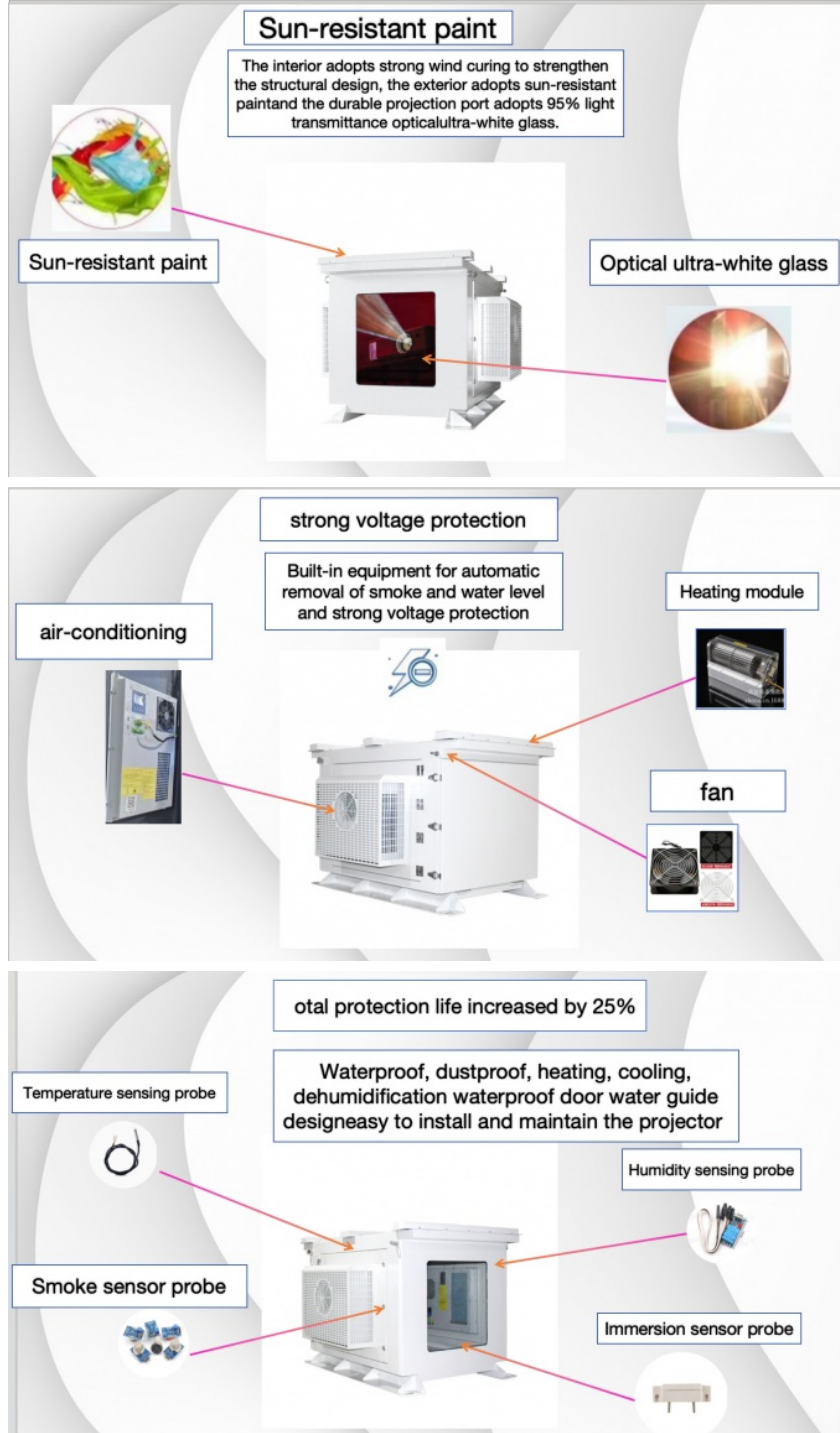


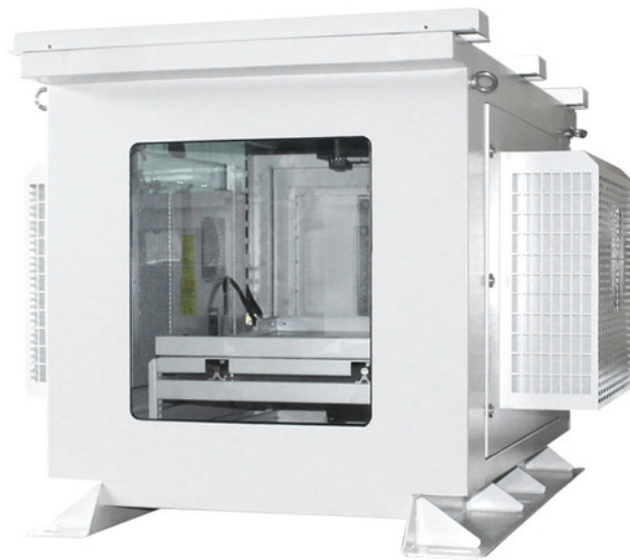
### Product Description

## Customizable Outdoor Projector Waterproof Box Materials and Surface Treatment for Long Service Life

### 1. Air conditioning internal circulation

1. The box body is made of high-quality galvanized sheet with a thickness of 1.2/1.5/2.0/3.0, and stainless steel, aluminum alloy and other materials can be selected.
2. The surface layer is electrostatically sprayed, baked and cured at high temperature, which has a long service life, and does not come off or crack.
3. The projection window uses ultra-white optical glass with a transmittance of over 95%.
4. Built-in intelligent control system, equipped with temperature sensor, temperature and humidity sensor and heating dehumidification module.
- 5, the temperature is lower than 5 degrees, humidity is higher than 90% heating start. When the temperature is higher than 10 degrees and the humidity is lower than 65%, the heating stops.





## 2.Specification

Specification	
item	value
Place of Origin	China
	Shenzhen, Guangdong
Brand Name	thisshirui
Cabinet Standard	According to customer's request

Protection Level	IP65
Type	Outdoor projector housing
External Size	can customize
Material	Powder paint
Type	Equipment Enclosure
Product Name	Outdoor projector housing
Material	Galvanized sheet
Surface treatment	Powder paint
Application	Outdoor Projector box
Function	climate control
Custom Service	Offerable
Feature	OEM ODM Support
Color	Accept Customized
IP Rating	IP66Waterproof Box
Ambient Temperature	-15 to 50 degree (5-122)
Ambient Humidity	0-100%
Temperature Control	5-40°C
Humidity Control	10-80%
Voltage and Frequency	220V-50HZ

### 3.FAQ

#### 1. who are we?

We are based in Guangdong, China, start from 2014,sell to Domestic Market(5.00%),Southeast Asia(3.00%),Mid East(2.00%). There are total about 11-50 people in our office.

#### 2. how can we guarantee quality?

Always a pre-production sample before mass production;

Always final Inspection before shipment;

#### 3.what can you buy from us?

Outdoor projector housing,Projector protective box,Projector waterproof box,Outdoor network cabinet,Sheet metal processing

#### 4. why should you buy from us not from other suppliers?

We have an independent design and R&D team and 10 years of industry experience.

#### 5. what services can we provide?

Accepted Delivery Terms: FOB,EXW

Accepted Payment Currency:USD,EUR,JPY,CAD,AUD,HKD,GBP,CNY;

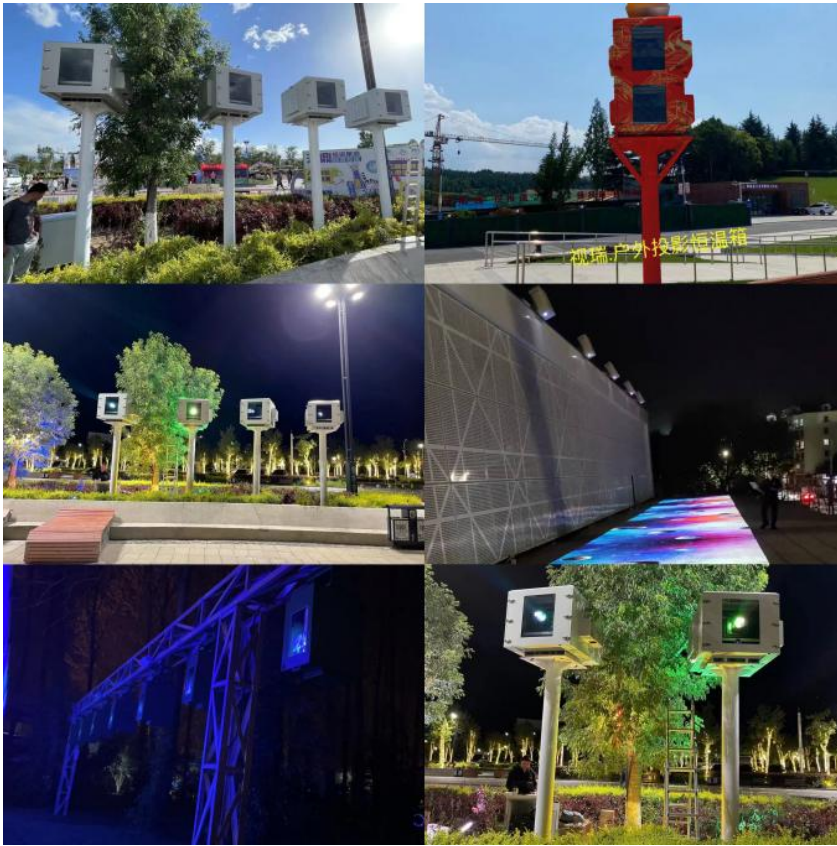
Accepted Payment Type: T/T;

Language Spoken:English,Chinese

#### 6. Where can I get product & price information?

A: Send us an inquiry e-mail, we will contact you as we receive your mail.

### 4.Outdoor Projector Enclosures Example



## 5. Moistureproof box configuration version

### Ceiling installation: safe and stable



The ceiling-mounted enclosure is the safest and most stable installation option. They are also the most versatile, because they can be installed anywhere with ceilings.

For applications where safety and stability are critical, a ceiling-mounted enclosure is a good choice. They are also a good choice for applications that need to install the projector in a higher position, such as stadiums or outdoor theaters.

### Track installation: flexible and adjustable



The track mounting shell is flexible and adjustable. They can move along the track to change the position of the projector.

Rail-mounted chassis is a good choice for applications that need to move projectors frequently, such as conference rooms or outdoor classrooms. For the need to install the projector in a ceiling with limited clearance, such as a beam.



## Column installation: fashion and caution



The cylindrical shell is smooth and cautious. They are a good choice for applications that need to install the projector in a visible position, such as hotel lobby or outdoor restaurant.

The column housing is a good choice for applications that need to protect the projector from theft. They are also a good choice for applications that need to install projectors in narrow spaces (such as columns).

### 6.Craft show

#### Craft show



### 7.Packing & Delivery



To better ensure the safety of your goods, professional, environmentally friendly, convenient and efficient packaging services will be provided.

Outdoor Projection Box ,  
Product design  
CAD drawing for approval  
Swimming pool options for extreme humidity and heat,

High humidity – Cave systems/underground/tunnel options for damp environments,  
Portrait, landscape or inverted  
Any number of doors,  
Thermal insulation,  
Any mounting i.e. uni-strut or M8 threaded studs,  
Any RAL colour finish,  
Any orientation - Vertical, landscape or portrait,  
Any IP rated cable entries. eg: Data, HDMI , SDI

**8.Foreign customers come to visit the factory to buy products.**



**9.Lead time**

Quantity (pieces)	1 - 50	> 50
Lead time (days)	20	To be negotiated

**10.Case video of outdoor projector shell**



**Shenzhen Shirui Exhibition Equipment Co., Ltd.**



+8614775699146



shiruisunshaohong@outlook.com



projector-cabinet.com

Room 103, Building B, Pingtaichang Technology Park, No. 15, Xiongyu Road, Tangxiayong Community, Yanluo Street, Baoan District, Shenzhen City